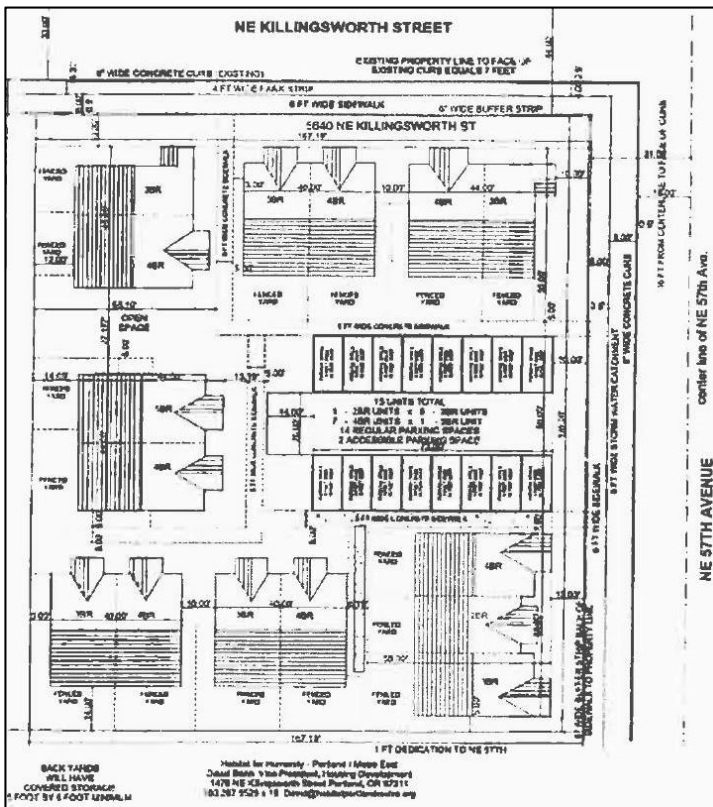


Habitat Land Loan, PORTLAND, OR



Description

Habitat for Humanity acquired a site located in the Cully neighborhood for future development of 15 new affordable homes. Participants must contribute 500 hours of sweat equity in the construction of their home or other Habitat homes. The primary repayment source is Habitat fundraising. The secondary repayment source is cash on hand, mortgage sales and sales from the Habitat retail store. The tertiary repayment source is sale of the collateral.

Location

5460 NE Killingsworth Street
Portland, Oregon 97212
Multnomah County



Network for Oregon
Affordable Housing

1020 SW Taylor, Suite 585 | Portland, OR 97205

P: 503.223.3211 | F: 503.223.0663

info@noah-housing.org

www.noah-housing.org

Financing strong Oregon communities

Affordability

The homes will be sold to Habitat for Humanity participants earning 35% and 60% of area median income for Multnomah County

Funding Partners

OHAF Loan

NOAH

\$617,500.00

Funding Date: March 26, 2016

Borrower

Habitat for Humanity Portland East Metro

Other Funders

Habitat for Humanity Portland East Metro

