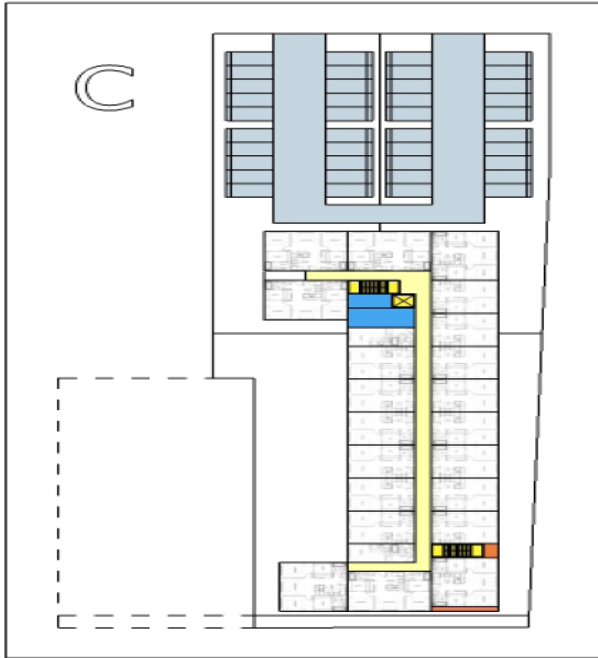


Gateway Affordable Land Loan, PORTLAND, OR



Description

Gateway Affordable LLC acquired three parcels of residential land in the Gateway neighborhood on which they plan to build a four-story apartment complex with up to 100 affordable housing units. The unit mix will likely include studio, one- and two-bedroom units with the majority of units being one-bedroom. Borrower intends to engage with Northwest Housing Alternatives as the project developer.

Location

9745-9747 NE Glisan and 9738 & 9702 NE Irving St.
Portland, Oregon 97220
Multnomah County



Network for Oregon
Affordable Housing

1020 SW Taylor, Suite 585 | Portland, OR 97205

P: 503.223.3211 | F: 503.223.0663

info@noah-housing.org

www.noah-housing.org

Financing strong Oregon communities

Target Population

Family and work force

Affordability

Proposed as a LIHTC project serving 60% median income and less.

Funding Partners

\$1,000,000 NOAH OHAF Loan

\$968,000 NOAH Pre Dev Loan

Portland Housing Bureau - This is the third OHAF to close with Portland Housing Bureau Participation
Partners of Gateway Affordable LLC

Borrower

Gateway Affordable LLC

Funding Date: December 7, 2016

